

Cherry Ridge Soil Pit 5/26/15

230-67

Steve Parisio, Sam Adams, Chuck Verstraeten,
Kevin McGill, Josh Shuman, Aaron ^{Toddler}, Intern ^{Haley}, NCRS person Olga?

| Site | P | Δp | Δe | scale | emay | time | R_1 |
|-----------------------------|-------|------------|------------|----------------------------|------|---------|-----------------|
| Biscuit Brook trailhead (A) | 29.90 | 0.00 | — | $R_1 = 1.156$ | 2090 | 10-22 | ↓ R_2 ↓ |
| Junction (B) | 29.58 | 0.32 | 370 | 2460 ✓ | 2460 | 11-17 | |
| Biscuit Brook (C) | 29.88 | -0.02 | 23 | 2113 → 2120 | | 11-56 | |
| Lunch on crest (D) | 29.56 | 0.34 | 393 | 2483 | 2483 | to 1:10 | |
| Soil Pit, arr. (E) | 29.12 | 0.78 | 902 | 2442 impossible | | 1-45 | |
| Soil Pit, IV. (E) | 29.08 | 0.54 | 645 | 2735 | | 3-40 | |
| Ash grove; Seeps (F) | 29.38 | 0.24 | 287 | 2377 | | | |
| below Biscuit Brook (C) | 29.61 | 0.01 | 12 | 2102 | 2120 | 4-18 | |
| Junction (B) | 29.31 | 0.31 | 370 | 2460 ✓ | 2460 | 4-35 | |
| Trailhead (A) | 29.62 | 0.00 | — | $R_2 = 1.194$ | 2090 | 5-20 | |

ANSCO BAROMETER ONLY:

$$R_1 = \frac{2460' - 2090'}{29.90'' - 29.58''} = \frac{370'}{0.32''} = 1.156 \quad (A \text{ to } B)$$

$$R_2 = \frac{2460' - 2090'}{29.62'' - 29.31''} = \frac{370'}{0.31''} = 1.194 \quad (A \text{ to } B)$$

Sam Adams had 817 meters
 $\times 3.281 \text{ ft/m}$
 $= 2681 \text{ feet for } (E)$

Vegetation

(A) Sign at roadside says SNY acc. 1951 to 1965. What are exact years for lots? TU at trailhead. Is 2090' a record low elevation?

Sam says *Viola mackloewii* has twisted petals & *V. blanda* not. We saw *V. mack.*

#36 ASH cut 18" diam, 20 ft up 135 y. about 155 y, dating back to 1860 just before Burroughs hiked through. Valley already barbed, but settlement came after U&DR in 1870 so any logging just began.

BC cut 15' up, 16" diam, 125 y. BC #50.
about 140 y, dating to 1875,
when valley was settled.

(B) below The steep PB talus betw. 2300' & 2400' may be 1° with large subgr PBs.

(C) Red cong. cobbler in Biscuit Brook Flood plain (!?) has red ss, sh, & siltstone

(D) to (E) Windthrow mounds 3 to 4 ft high

(E) At soil pit site: BC, B, SUBG, ERK, LL, \$INT, OX. One BC 32" dbh.

(F) Seeps below Ash grove have VV, VCUC, Medea. (over)

Veg., continued - BC broke $\pm 35'$ up. 22" diam

shows 35 years in outer $4\frac{1}{4}''$ of radius.

$$\frac{35y}{4\frac{1}{4}''} = \frac{?y}{22/2 = 11'' \text{ full radius}} + 35 \text{ or so years in height}$$

$91 + 35 = 126y$. estimated age

Growing 1 to 3mm/y in several places or 11 inches = 279mm in radius

$$\frac{11 \text{ inches} = 279 \text{ mm}}{2 \text{ mm/y}} = 140y$$

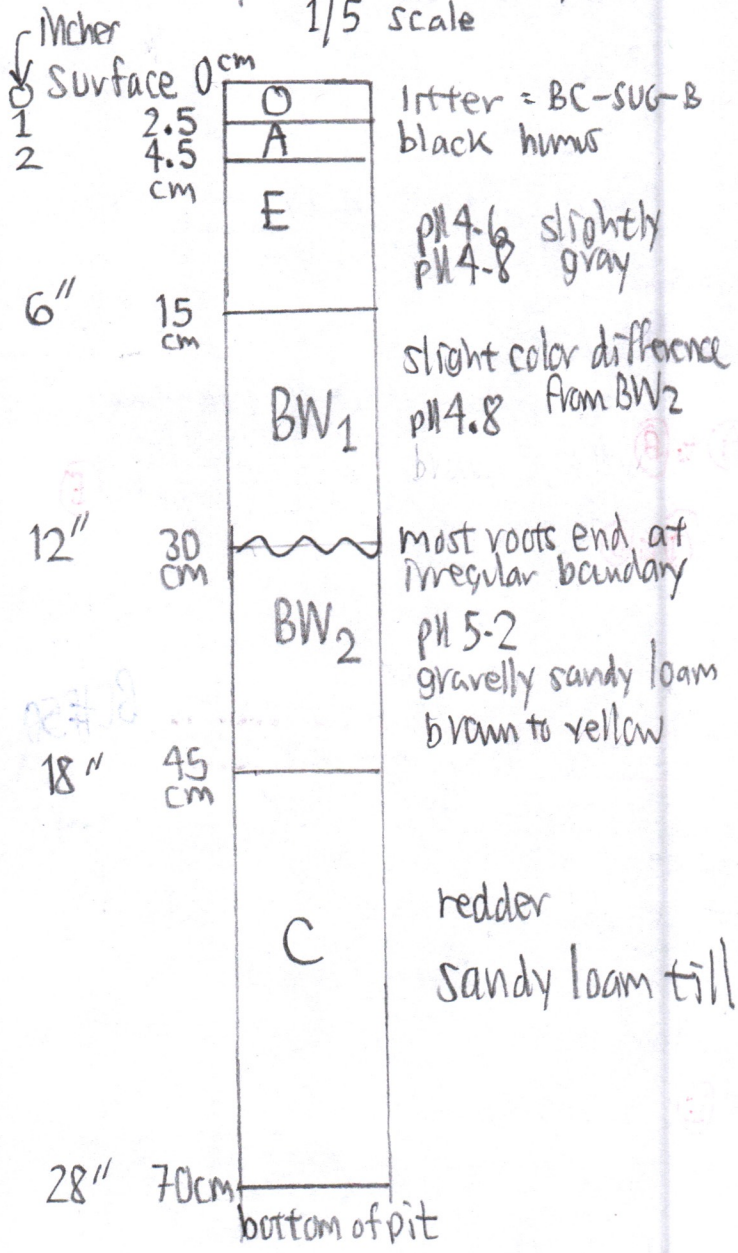
+ 25y height at 8" / y

165y

230-68

Soil pit dug along NE side of fallen BC

Moder Soil profile (part-way between a Mox and a Mull)
1/5 scale



Redd gray SS till
Deep
No fragipan
well-drained
frigid
∴ ELKA series,
a Dystrudert (formerly a Dystrudert)

Chuck studied the rock & cobbles removed from the pit & broke many open with a hammer.

Definitions:
Conglomerate = >50% pebbles
Pebbly SS = <50% pebbles

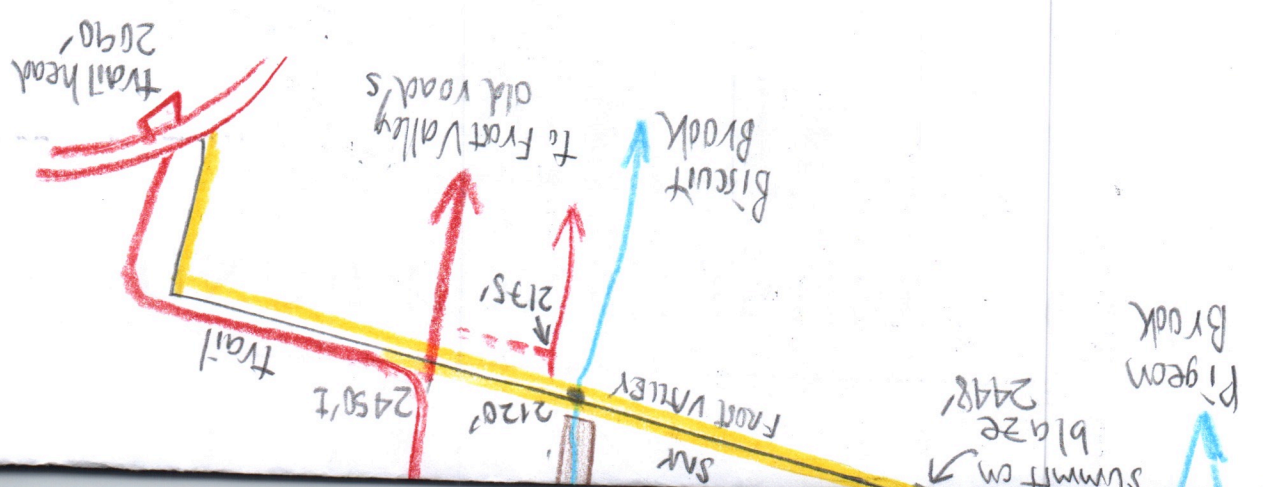
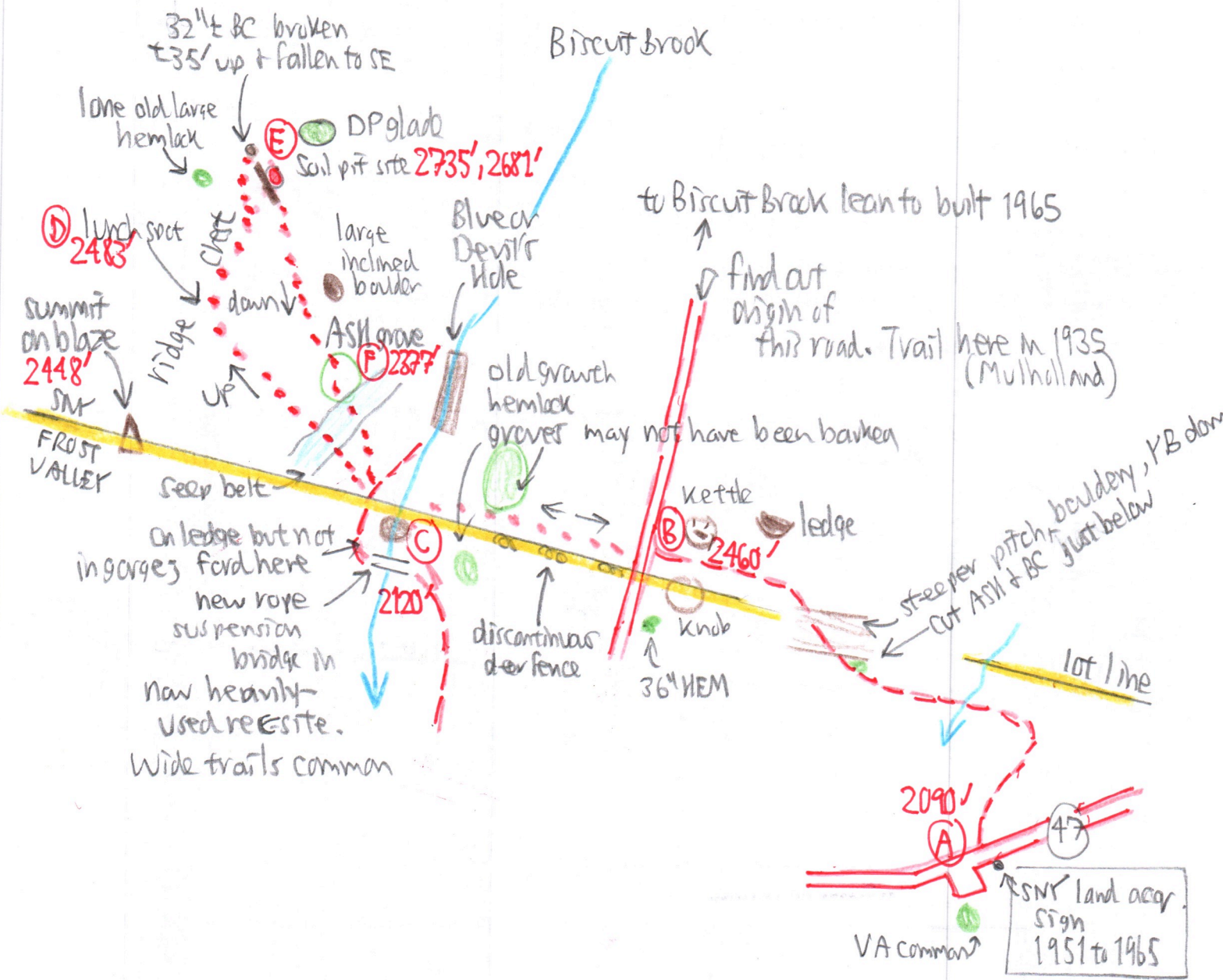
One cobble had red quartz pebble: jarper

Tally of cobbles
1 conglomerate
2 pebbly S
22 sandstone of 25 total

Of the 25, 21 were red & 4 greenish with chlorite (Mg Si O_x)
Chlorite indicates less hematite color marking!

C-ERM. field trip route of 5/26/15

230-69



N approx
↑

230-70

To Eagle Mtn. 3610'

field notes pp 230-7+2
Open areas 8/19/75

230-70

Bug #305
Furlow SWK

Big Indian Mtn. 3700'

3357'

Col to Fir Mtn. 3180'

3290'

trail elevations correlations p. 230-36 1999

#231-1 6/13/04
Ledges 2217' top to 2941'

Bitcut Brook

x 2700' stone monument + a line?

pp 230-49 to 52 10/29/07

Field notes copies taken in field:

| source | pp. |
|-----------------|---|
| CCCD | 230-41 ff 230-32 ff (one more) (230-36 ??) |
| 2810 extra copy | 230-28 ff |

till knob 2731'
landslide 2702'

hemlock grove on spur

2945' upper limit of MK in 1999

Hemlock Grove Field Notes p. 230-34 8/21/99

"Chem Ridge" field notes
pp 230-28 to 31 6/31/98
pp 230-41 to 43 6/12/03

"Chem Ridge"

Age estimates in 1998:
96 y
130
140
168
171 y

Chem Grove > 2800' up to 2650'

Max diam. 35.2" 34.8" in 2003

Devil's or Blue Hole pp. 230-31 p. 230-47

Blue Hole Gorge & Falls 2158'

1st big cherry 2294' 2306'

3360'
huge 41" SUGAR MARE 2458'

ford 2358'

8/28/11 flood after east tributary Pine Shanty Brook?

2320' lean-to

2363'

swamp

This diagram prepared for 5/26/15 CERM. Soils field trip, but used only partially. The only site visited was Chem Ridge BC grove for the soil pit.

Biscuit Brook area timetables

5/25/15 230-71

| LV. (47) | 8/19/75 p. 230-1 | 7/21/69 p. 230-15 | 6/3/98 p. 230-24 | 8/21/99 230-32 | HEM grave 5 hrs. | BCS 6/12/03 p. 230-41 | 10/25/07 p. 230-49 | 7/30/13 230-64 |
|-----------------------------------|---|----------------------------------|---------------------|--------------------------------|----------------------------|-----------------------------|-------------------------------------|-------------------|
| 90' bend | | 9-13, 5:00 8 hrs to BI summit | 9-05 9-42 | 8-46 | 1-38 1-15 | 9-30 via Frost Valley | | 9-35 |
| lean to ford confluence Hem grave | | 10:00, 4:12 | | 9-36 9-52 10:18 11:00 | 12-23 12:10 bake top | | | 10:57 |
| 3400' bend | | 11:00, 2:58 | | | | | | 12-30 |
| 8500' spur | | 11:02, 2:55 | | | | | | 12-55 2-55 |
| Big Indians Mt | 3:02 down to trailhead along trail | 11-34, 2:19 | | | | | | OUT 5-32 |
| Col to Fir ledges confluence | p. 231-4 9-50 to 1-55 2-20 top down 4-57 | 6/13/04 Laune Ghirg | | | | | 2-58 ford 4-31 out 9-50 | |
| Blue Hole bottom chemos | | | 10-45 | | | 10-10 | | |
| top chemos | | | | | | 10-50 | | |
| Summit 3360' | | | 12-15 | | | 1-05 via Frost Valley | | |

Ron Goff
7/30/13
10:57

from Elk bushnell 3 hrs out from Col